

THERAPEUTIC BEHAVIOUR SUPPORT PLACEMENT

Nine weeks of supported accommodation and skill building opportunities for those aged 6 - 18 years. Delivered by our team of caring and passionate autism professionals.

Autism Specific

Our care team incorporate positive behaviour support and visual supports into the daily program. All staff have professional expertise in autism and apply a wide range of person centred interventions when working with the spectrum of young people. Our individualised planning and behaviour support are all designed to build the capacity and skills of our clients.

Mansfield Based

We offer a nine-week residential placement in Mansfield, Victoria. This is supported accommodation and intervention for those aged 6-18 years who need a little extra help to develop important life skills. This placement is supported by our autism practitioners (MAPs) who help families transfer the skills learnt back to the home environment.

Health and Wellbeing

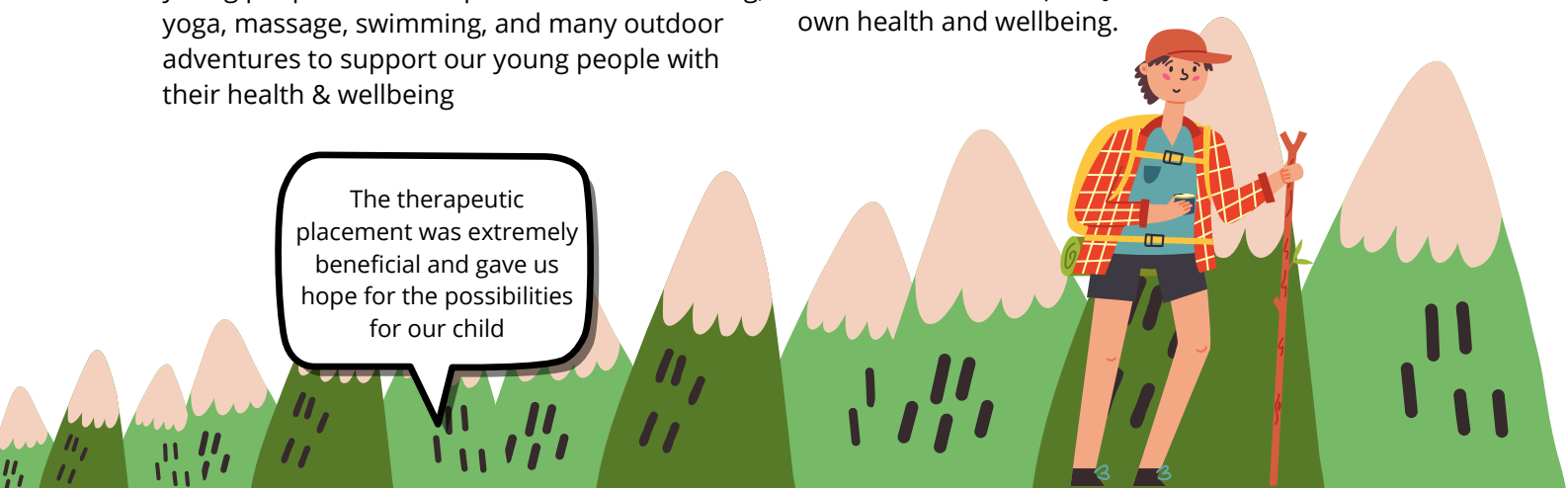
No screens! Our program is built around 'no technology'. We explore new activities and build healthy outdoor habits and social skills for our young people. We run equine facilitated learning, yoga, massage, swimming, and many outdoor adventures to support our young people with their health & wellbeing

Skill Building

Our program is rich with skill building opportunities. The placement is flexible and responsive to participant needs and goals. In general, we work on skill development in daily living skills such as toileting, self-care, personal hygiene, eating programs, sleep hygiene, night-time, morning and afterschool routines, social and communication skills, emotion regulation.

Family Respite

Everyone needs a chance to rest and recharge! Many of our parents report that they experience additional stress. Our placement provides families with some quality time to focus on their own health and wellbeing.



The therapeutic placement was extremely beneficial and gave us hope for the possibilities for our child

Therapeutic Behaviour Support Placement NDIS Information

Families require
funding under
Short Term
Accommodation and
Capacity Building -
Improved
Relationships.

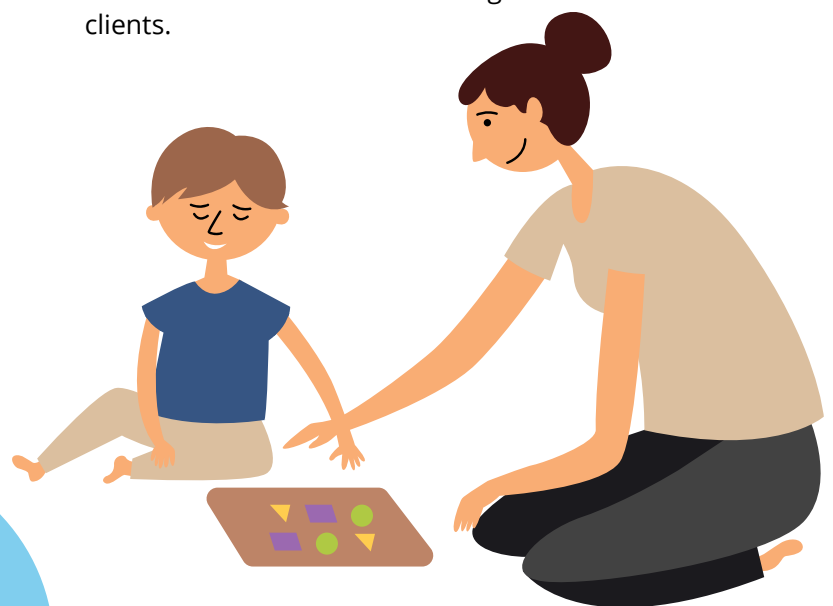


Key details:

- The Therapeutic Placement is delivered in Mansfield, Victoria.
- The placement runs for 9 weeks and provides 24/7 care.
- Our young people are supported by a staff ratio as determined by need.
- Clients stay in safe, supportive and caring residences that support person centred goals for daily living and community access.
- We are family centred practice, our families are helped by our MAPs (Behaviour Practitioners) who model and coach the family on implementing the strategies back into the home environment.
- We are person centred, all strategies and supports are based on the individual client needs, strengths and capacity.
- Clients have home weekends where they connect and spend time with family during the placement and practice skills learned.
- Our farm is currently in its growth phase, we are building and creating new experiences and spaces.

In our service, we aim to:

- Reduce behaviours of concern and increase self regulation and communication skills.
- Increase adaptive behaviours (daily living skills such as toileting, sleeping, diet & self care).
- Increase the social and emotional wellbeing of our families, reducing anxiety and stress by offering 9 weeks 24/7 care & supported accommodation.
- Build our families confidence and understanding of autism, empowering families to use evidence based strategies and supports for their child.
- Increase participation of our young people within the community.
- Increase the health and wellbeing of our clients.



To apply, visit:

www.autismmansfield.org.au

Contact Us!
03 5775 2876
info@autismmansfield.org.au
PO BOX 715,
Mansfield, Vic, 3724

Mansfield Autism Statewide Services are committed to promoting and protecting at all times the best interests of children and young people involved in its programs.

Any child having contact with Mansfield Autism Statewide Service, has the right to feel safe and be safe. The wellbeing of children in our care will always be our first priority and we have zero tolerance to child abuse.